

Geo-Referencing ASTER Level 1B data using ENVI 4.0

Created by: Erin DiMaggio 6/8/05

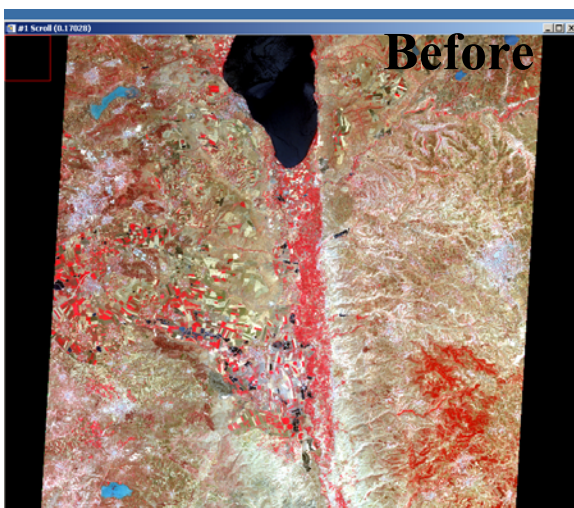
1. On the ENVI tool bar click on *“Basic Tools”* – from the pull down menu select *“Rotate/Flip Data”* – the *“Rotation Input File”* selection window will open.
2. If you have the .hdr image already open, select the bands you want to convert (vis, swir or thermal). If you do not have the image open go to *“Open File”* on the bottom of this menu, find and select your image/band combination you want from there. *“File Information”* should then appear, check to make sure the Projection and Datum are correct for the image. If everything is correct select *“OK”*
3. After you click *“OK”* the *“Rotation Parameters”* window should open. From there, the Angle value should already be filled in. Select if you are saving your image to **File** or to **Memory** (meaning just to view and not as a permanent file). If you are saving this to FILE, use the *“Choose”* option to save the image to the directory you want the image to go – make sure to name the file. Click *“OK”*. It will process your rotation
4. The bands will appear in the *“Available Bands List”* window. The file names should look like *“Rotate (image name and #)”*. Select the desired band combination and view.

1 Rotate/Flip Data

2 Rotation Input File

3 Rotation Parameters

4 Available Bands List



ASTER image will now be geo-referenced w/ north-up

