



Lettis Consultants International, Inc.

Geohazards Consulting Career

Stephen Thompson
October 20, 2020

Geologic and Seismic Hazards Consulting

- Personal involvement: 18 years with same core group
- LCI:
 - 40-person company, SF Bay Area HQ
 - Geologists and Engineering Seismologists
 - MS and PhD education; PG, CEG, PE licenses
- Employee owned
- Focus on large, critical infrastructure

Geologic and Seismic Hazards Consulting

- Resiliency, reliability of infrastructure, communities
 - $Risk \cong Hazard \times Fragility \times Consequence$
 - Help engineers evaluate risk by characterizing hazard
 - Help engineers design “safe” structures
 - Help communities understand hazards
- Critical Facilities, Lifelines



Geologic mapping, surveying



Diablo Canyon NPP
San Luis Obispo, CA

Fault Characterization



Work for a siting study,
western US



Landslide mapping; Rock-mass characterization



Hong Kong Highway Corridor



Caldecott Tunnel 4th bore
Oakland, CA

Lake Oroville, California – Feb. 2017



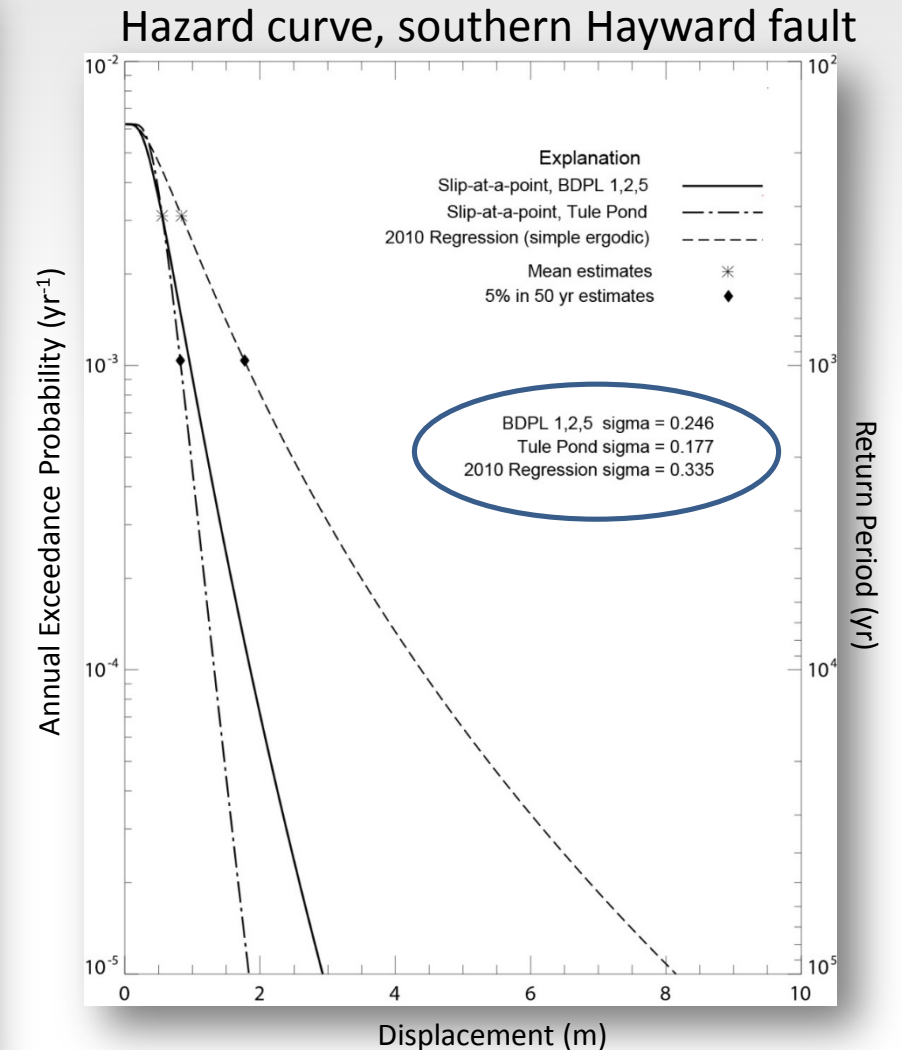
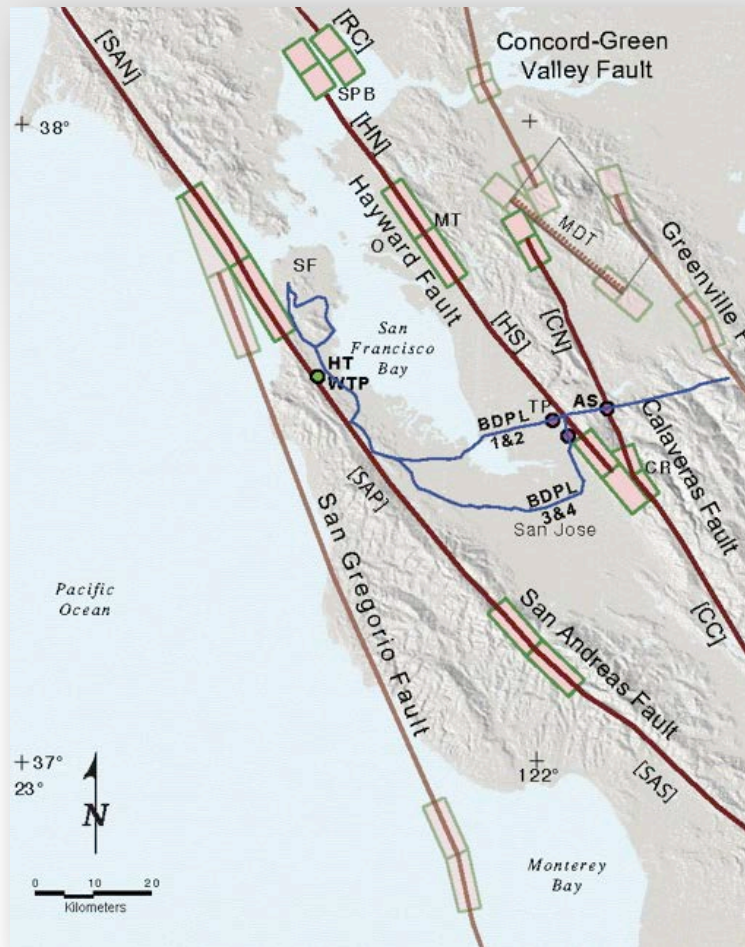
Lake Oroville Spillway Damage



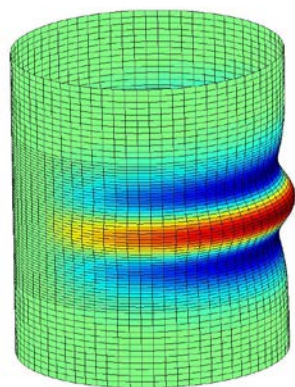
Lake Oroville Spillway Damage



Fault Displacement Hazard – Hetch Hetchy Aqueduct



Pipeline Retrofits at Fault Crossings



Mesh of Typical Winale Band Geometry



PG&E
Pipeline Mitigation
Calaveras fault